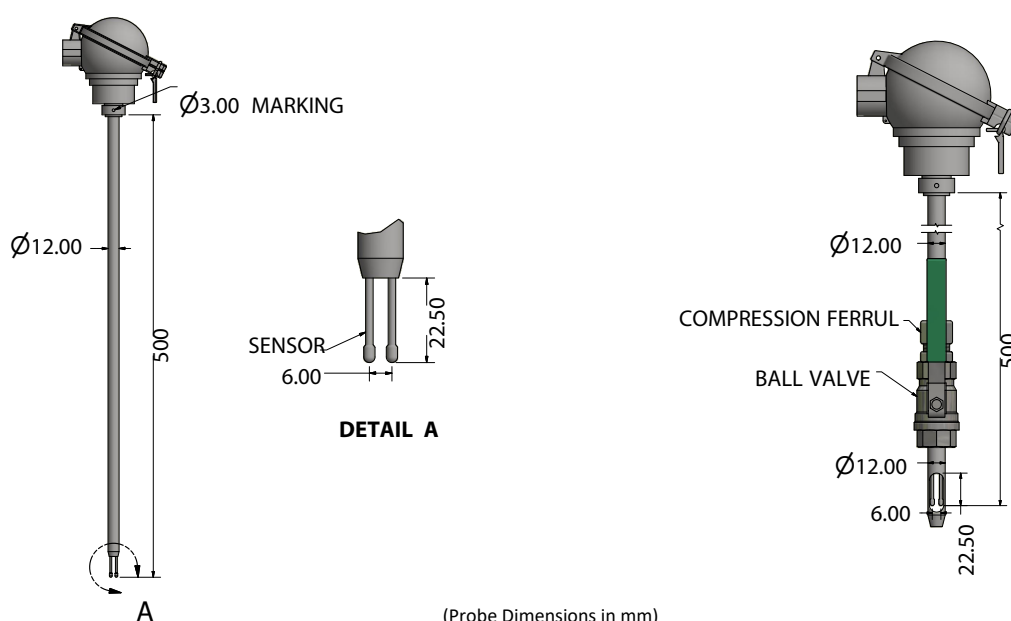
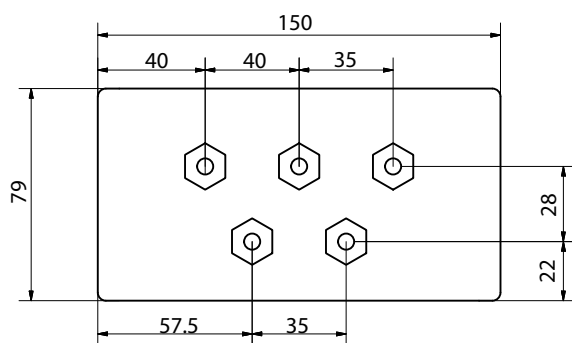


<i>Design</i>	Insertion probe with separate electronic converter (remote control)
<i>Function Principle</i>	Heat dissipation technique (calorimetric), primary signal mass flow proportional, independent of pressure and temperature
<i>Sensor Details</i>	2 X Pt-100 RTD with ceramic wire-wound sensor element encapsulated in SS-316Ti (1.4571) tube (4-wire Technique) Diameter:12mm / 25mm (Optional) Length: 250mm, 500mm, 1000 mm (Other upon request)
<i>Sensor Material</i>	SS-316Ti (DIN1.4571), HALAR [®] & PFA Coating for corrosive gases (optional) (Others consult factory)
<i>Fluids</i>	Air & Gases
<i>Flow Range</i>	0.6 – 65 Nm/s (std), 0.6 -150 Nm/s (optional) (with extrapolation above 65 Nm/s) (Reference as per DIN 1343; 0°C/1.01325 bar(a), 0%RH) (other upon request)
<i>Turndown ratio</i>	100 : 1
<i>Stored Calibration Curve</i>	60 points, firmware internal Spline interpolation
<i>Accuracy (%)</i>	±1.5% reading (-40°C-100°C); ±2.0% reading (0°C – 200°C/300°C/400°C, HALAR [®] & PFA) at reference calibration conditions upto 75 m/s
<i>Repeatability (%)</i>	±0.5% of reading
<i>Response time t90</i>	<1.5 secs
<i>Warming Up Time</i>	5min after switching on
<i>Operating temperature</i>	-40°C to +100°C, 0 - 200°C; 0 -300°C; 0 - 400°C
<i>Operating pressure</i>	16bar(g) Max. PN16 (Higher upon request)
<i>Ambient temperature</i>	-20°C to +60°C
<i>Installation Position</i>	Unrestricted, apart from bottom of pipe to avoid any moisture or particles
<i>Steadying Distance</i>	15 D upstream, 5D downstream (where D=Inner diameter of pipe) (Minimum steadying distance depends upon the application. Longer steadying distances have to be considered, if double elbows or partly closed valves have been installed in front of the unit) (Note: Suitable flow straightener is recommended for short steadying distance)
<i>Process connection</i>	½"BSP(M) SS-316 Compression Ferrule; ½"Full port ball-valve (optional) (Other upon request)
<i>Accessories (optional)</i>	Automatic compressed air purging system; other upon application study

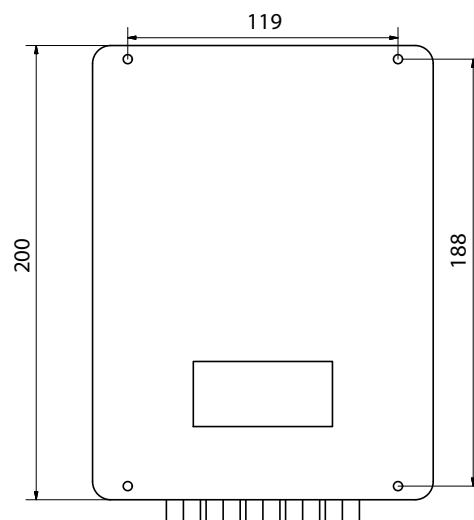


(Probe Dimensions in mm)

Remote Signal Transmitter	Microprocessor based, complete and automatic compensation of temperature conditioned signal drifting. Digital conductivity compensated adjustment of heater over temperature
Power Supply	24VDC (18 - 36VDC) OR 100 – 265 VAC@50Hz
Power Consumption	< 5 watts
Display	16 X 4 LCD Backlit Display
Display Indication Values	Mass flow and totalizer, volume flow and totalizer, velocity, temperature, heater temperature with power consumption, temperature difference
Measuring Unit:	Mass Flowrate (Kg/Hr) & Totalizer (Kg) Volume flowrate (Nm ³ /Hr or SCFM) & Totalizer (Nm ³ or SCF) & Process Temperature (°C)
Signal Input	1xPt100 heater, four-wire technique, 1xPt100 reference, four-wire technique
Signal Output	0/4-20 mA DC (Isolated @500Ω) OR 0 -10VDC flowrate proportional; 1 NO / NC Relay contact @ 250VAC / 6A. programmable for Temperature OR Flowrate, Opto-coupler impulse output, other data available on request
Ingress Protection	Sensor probe: IP67; Signal Transmitter: IP65(std)/ IP66(optional) as per IS-60947/IEC-60529 (Other upon request)
Enclosure Protection	Flameproof Gas Group IIA, IIB, T4 (Optional) (Other consult factory)
Enclosure MOC	ABS Plastic 150mm(W) x 200mm(L) x 79mm(H) (standard); Aluminum Diecast 160mm(W) x 260mm(L) x 91(H) (other upon request)
Certifications	EMC/EMI compliant as per IEC 61000 standards
Connecting Cable (Electronic Converter to Probe)	FEP/PTFE (optional) Insulated, Length 5m (standard), 10m (optional) (Other upon request)
Electrical Connections	Plugged spring-cage connection for all inputs and outputs (max.1.0mm ²)



(Enclosure Dimensions in mm)

**Table:** Pipe dimension & flowrates as per DIN 1343 0°C/1.01325 bar(a), 0% RH)

mm	15-25	32	40	50	65	80	100	200	300	3000
Nm ³ /h	100	170	260	410	700	1000	1700	6800	15200	1500000

Note: Technical specifications and dimensions subject to change due to continuous research and development.

LEOMI INSTRUMENTS PVT. LTD.

E-17/5, Electronic GIDC, Sector-26, Gandhinagar-382027, Gujarat, INDIA.

+91 79 23287899, +91 90547 50586 ✉ sales@leomi.in 🌐 www.leomi.in